

# Centrale au sol 1.8 MWc

## Schema Unifilaire Option 1

Maîtrise d'ouvrage :



Société Aéroportuaire de  
Lomé - Tokoin  
BP 10112  
LOME  
TOGO

Maîtrise d'oeuvre :



IDESUN  
B8, VEAS Minerve  
40 avenue des Gardians  
34 160 Castries  
FRANCE

n° du document :

AF 19\_141 - 31-010

Index :

A

Echelle :

-

Format :

A3

Date :

03/11/2020

Dessiné par :

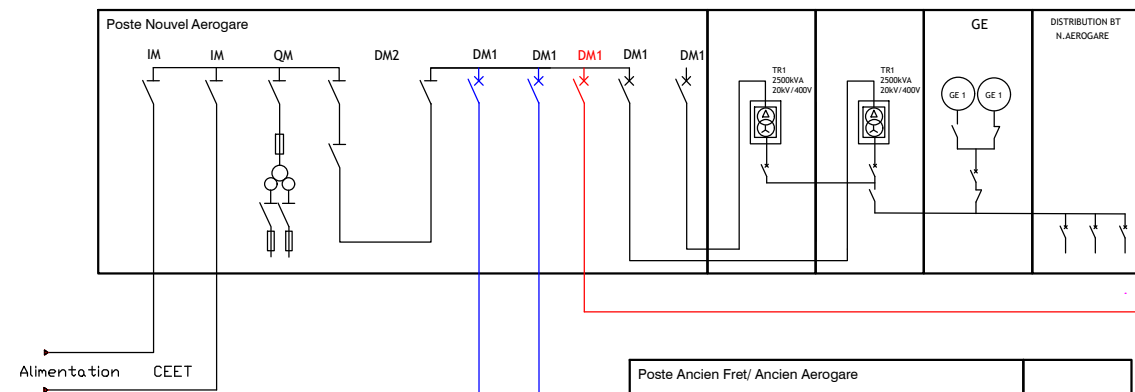
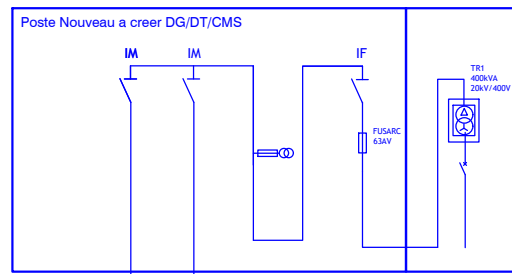
LED

Vérifié par :

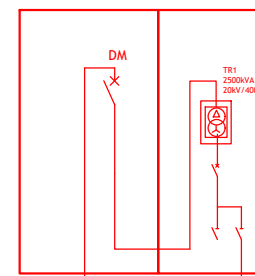
EL

Revision

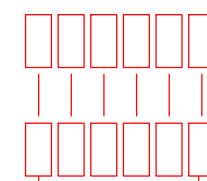
Index	Description	Date
A	Version d'origine	03/11/20
B		
C		
D		



Poste Centrale  
au sol



Champ PV au sol  
Option 1 : Pc = 1.8 MWc



Onduleur PV  
Option 1 : Pnom = 1.6 kW

Alimentation CEET

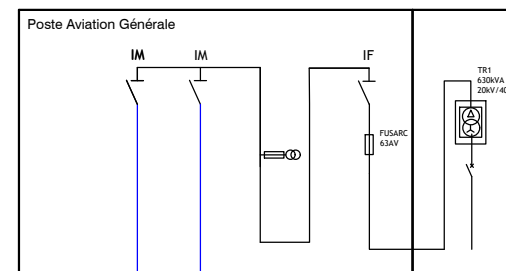
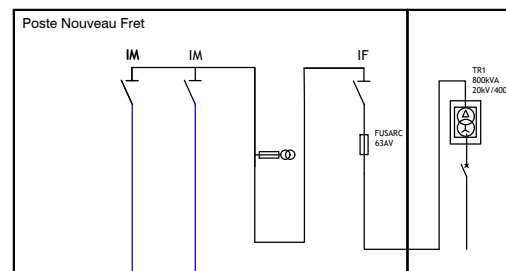
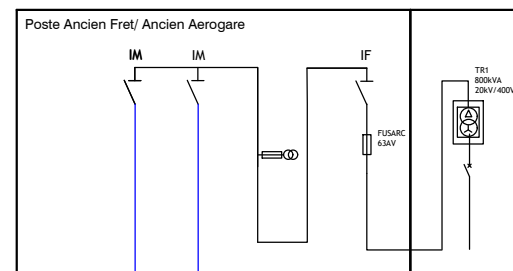
220 m

600 m

480 m

560 m

1500 m



— Existant  
— A créer